

User's Manual

USB 3.0 Expansion Card



TS-PDU3

(Version 1.6)



Table of Contents

Introduction 	1
Package Contents 	1
Features 	2
System Requirements 	2
Safety Precautions 	3
■ General Use.....	3
■ Transferring Data.....	3
■ Power	3
Product Overview 	4
Hardware Installation 	5
Driver Installation 	7
Troubleshooting 	11
Specifications 	12
Ordering Information 	12
Transcend Limited Warranty 	13

Introduction |

Congratulations on purchasing **Transcend's USB 3.0 Expansion Card**. This easy-to-install card allows you to add revolutionary new USB 3.0 ports to any desktop computer with a PCI Express slot. Its PCI Express 2.0 x1 connection interface is compatible with virtually all current motherboards, and guarantees unrestricted two-way communication between your PC and any USB devices you plug into the card. With two SuperSpeed USB 3.0 ports, which have bandwidth up to 5Gbits per second, Transcend's USB 3.0 Expansion Card is ideal for use with new USB 3.0 high-capacity external storage devices. This User's Manual is designed to help you install and use your new USB 3.0 Expansion Card.

Package Contents |

The **USB 3.0 Expansion Card** package includes the following items:

- USB 3.0 Expansion Card



- Quick Installation Guide



Features |

- Add USB 3.0 ports to any desktop computer with a PCI Express® slot
- Connection bandwidth up to 5Gbits per second (in USB 3.0 mode)
- Ultra-fast PCI Express® interface eliminates speed bottlenecks
- Installs easily in any PCIe slot, including x1 slot
- Backwards compatible with USB 2.0 and USB 1.1 devices
- Supports PCI bus power management interface rev. 1.2
- Compact size saves space and inside your PC
- Fully compatible with PCI Express® 2.0
- Two external USB 3.0 ports
- xHCI compliant

System Requirements |

1. One of following operating systems:
 - Windows® XP (32bit or 64 bit)
 - Windows® Vista (32bit or 64 bit)
 - Windows® 7 (32bit or 64 bit)
2. Internet access to download the device driver.

Safety Precautions |

These usage and safety guidelines are **IMPORTANT!** Please follow them carefully.



Before installation, please ensure your computer is off and its AC power cord is disconnected.

■ General Use

- To prevent damage caused by electrostatic discharge (ESD), always touch a grounded or large metal object before handling the USB 3.0 Expansion Card.
- During operation, avoid exposing the card to extreme temperatures above 70°C(158°F), or below 0°C(32°F).
- Do not allow the card to come in contact with water or any other liquids.
- Do not store the USB 3.0 Expansion Card in any of the following environments:
 - Direct sunlight
 - Next to an air conditioner, electric heater or other heat sources
 - In a closed car that is in direct sunlight
- Please ensure that the USB 3.0 Expansion Card's metal bracket has been secured to your computer case with a screw or other mounting method provided by your case manufacturer.

■ Transferring Data

- **Transcend does NOT take any responsibility for data loss or damage during operation.** We strongly advise that you regularly create backups of important data in multiple locations and on different storage mediums.
- To ensure Super-Speed 5Gb/s data transfer rates when connecting a USB 3.0 storage device, please make sure the USB 3.0 Expansion Card drivers are correctly installed. Please refer to the *driver installation* section of this manual.

■ Power

- The power provided by your computer's PCI Express slot is insufficient to power USB 3.0 devices. Please ensure that the 4-pin or 15-pin power connector is connected to your PC power supply before connecting any devices.



The 4-pin or 15-pin power connector MUST be connected to your PC power supply to provide sufficient power for USB 3.0 devices

Product Overview |

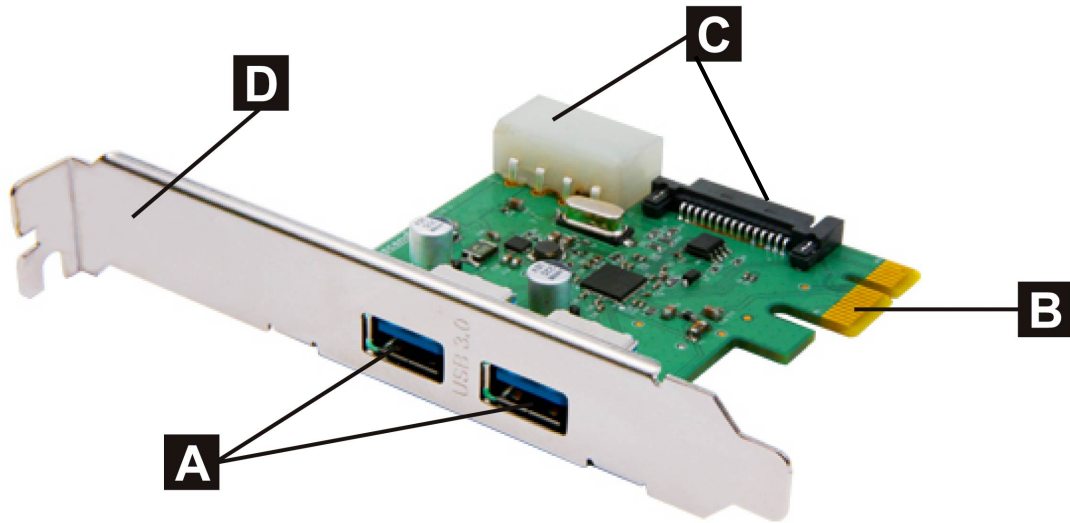


Figure 1: USB 3.0 Expansion Card

- A** Two USB 3.0 Ports
- B** PCI Express x1 Connector
- C** 4-pin / 15-pin Power Input
- D** Installation Bracket

Hardware Installation |

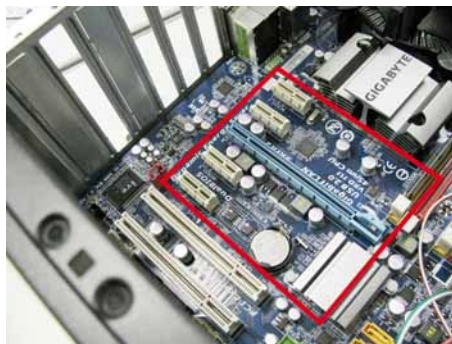
1. Turn off your computer and disconnect its AC power cord.



2. Open your computer's case and locate its PCI Express slots. (Check the owner's manual of your PC if you are not sure how to do this)



3. Select a PCI Express slot to install the USB 3.0 card into (short and long slots will both work), and remove the metal bracket or placeholder next to the slot.



4. Connect an available 4-pin or 15-pin power connector from your computer's power supply to the USB 3.0 Expansion card.

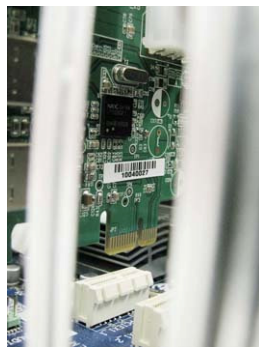
Note: Before handling the USB 3.0 Expansion Card, first ground yourself by touching a large metal object such as the computer case.



Connecting the power backwards will damage the USB 3.0 Card.



5. Align the USB 3.0 Expansion Card with the PCI Express slot and press down firmly until it is fully seated in the slot.



6. Secure the USB 3.0 Expansion card to the computer case with the appropriate screw or other mounting method used by your case.



7. Close the computer case and reconnect the AC power cord along with any other necessary cables.



Driver Installation |

1. Go to www.transcend-info.com/downloads. Use the drop down menus to locate your product or enter its model number in the Search field.

Support and Download

Download

Download Wizard

Transcend Elite Data Management

Auto Format Tool

JetFlash Online Recovery
Repaired flash drives

RecoverX
Bring Lost Photos Back

Acronis True Image HD
Back Up Your System with Ease

Download Wizard

Search by Product

Search by Keyword

Select Product Family

Select Product Line

Select Product Subtype

Select Part Number

Download Wizard

Search by Product

Search by Keyword

Type all or part of the model name that you are looking for

Search

Search Result

Download Wizard

Search Result

2. Download the “**PDU3 USB 3.0 Driver**”, then double-click the “**Setup.exe**” files to install the drivers on your computer.

Download Wizard

☒ Search by Product ☐ Search by Keyword

Select Product Family

Memory Cards
USB Flash Drives
External Hard Drives
Solid State Drives
Digital Music Players
Digital Photo Frames
Card Readers
Digital Peripheral Products
Expansion Cards

Select Product Line

Expansion Cards

Select Product Subtype

PDU3 USB3.0 Expansion Card
PNU3 USB3.0 ExpressCard Adapter
PDC3 Expansion Card

Select Part Number


TS-PDU3

Search Result:PDU3 USB3.0 Expansion Card (TS-PDU3)

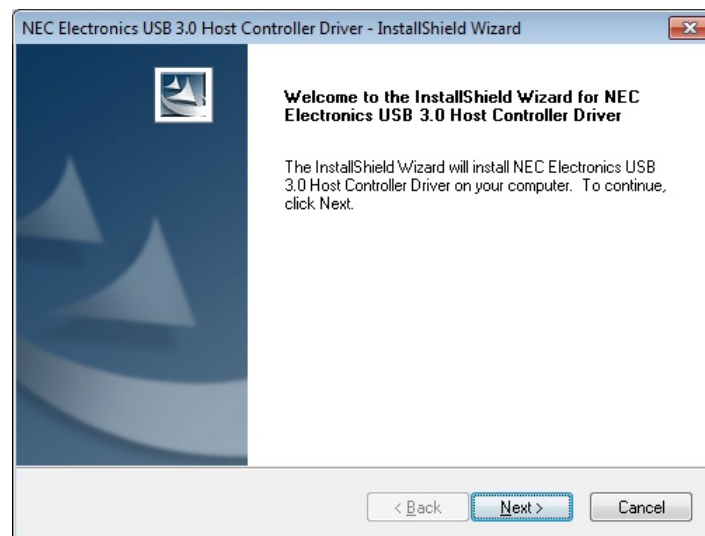
Manual (10)

Driver/Firmware (2)

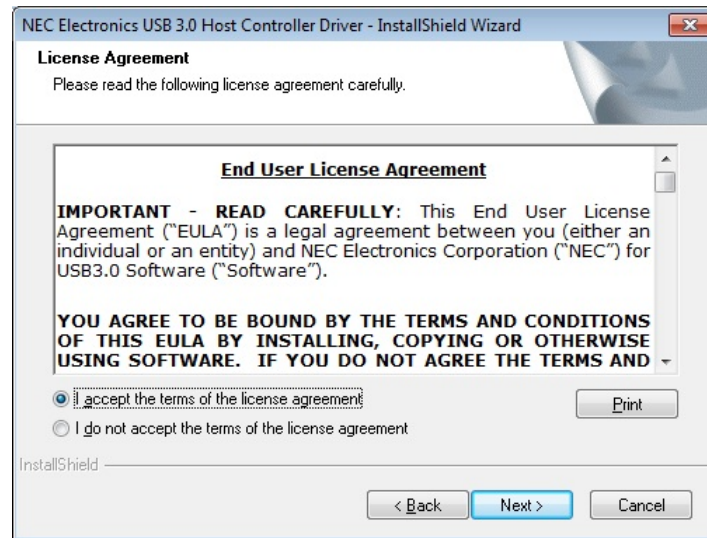
Product Sheet (1)

Description	Language	OS	Size	File	Release Date	Memo
TS-PDU3 Driver (uPD720202)		WinXP Vista Win7	-	 Local Server  Global Server	2/23/2012	v3.0.12.0 (with SATA power connector)
TS-PDU3 Driver (uPD720200A)		WinXP Vista Win7	-	 Local Server  Global Server	2/23/2012	v2.1.25.0

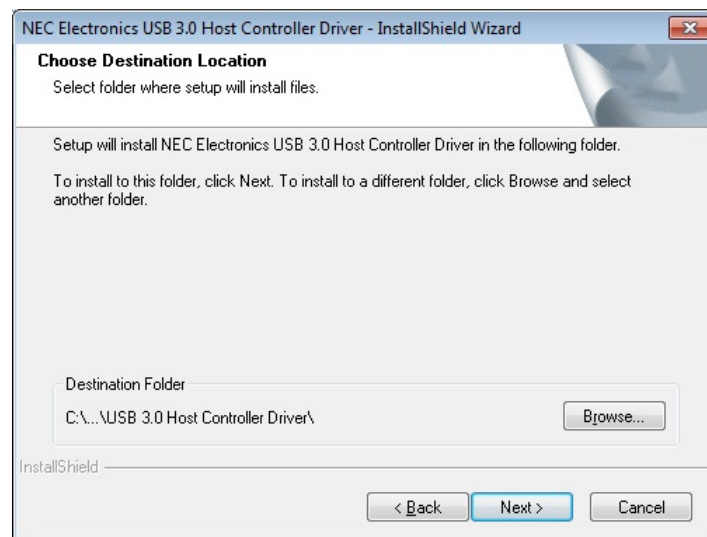
3. The installation wizard will start. Click “Next” to continue.



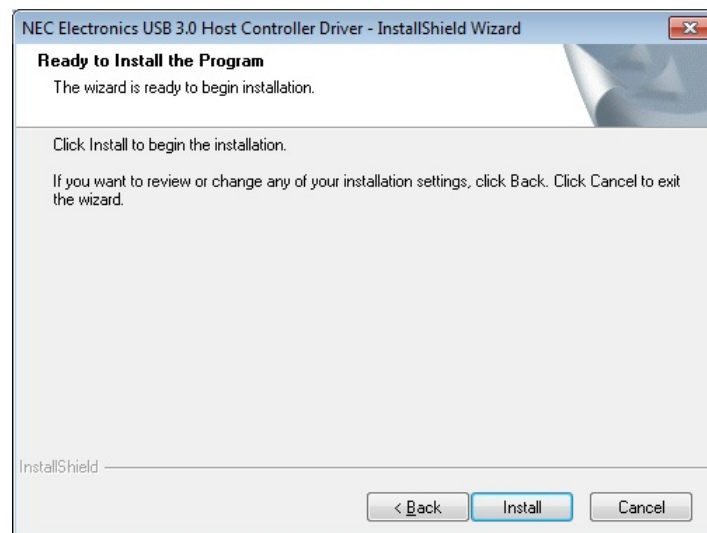
4. Choose “I accept the terms of the license agreement” and then click “Next.”



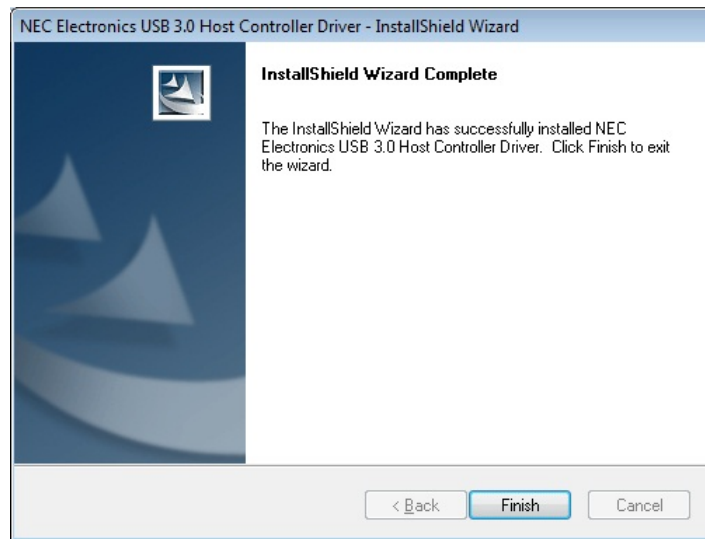
5. Choose a destination folder for the driver files and click “Next” again.



6. Click “Install.”



7. Once the driver has finished installing, click “Finish” to exit the wizard.



8. Restart your system.

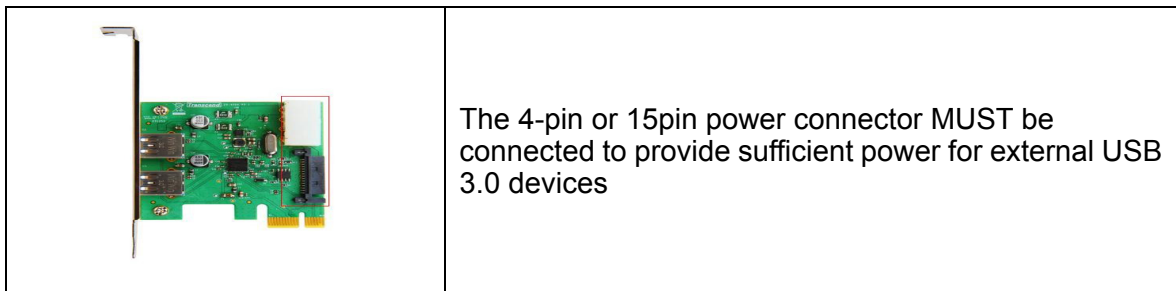
Troubleshooting |

If a problem occurs with your USB 3.0 Expansion Card, please first check the information listed below before taking the card in for repair. If you are unable to remedy a problem after trying the following suggestions, please consult your dealer, service center, or local Transcend branch office. We also have FAQ and Support services on our website.

■ **USB 3.0 devices cannot be recognized**

Check the following:

1. Is your USB 3.0 Expansion Card properly plugged into the PCI Express slot? If not, unplug it and plug it in again. If it is properly connected, try using another available PCIe slot (x1, x2, x4, x8, or x16).
2. Ensure that the driver has been installed successfully.
3. Is the PCI Express slot disabled in the BIOS settings? Please see your motherboard's user manual for instructions on how to enter the BIOS and enable the PCIe slots.
4. Is the USB 3.0 Expansion Card connected to your computer's power supply? Ensure that you have connected the 4-pin or 15-pin power connector from your PC power supply to the Expansion Card. For best results, use a power cable that is not connected to hard drives or other components with high power consumption.



5. Ensure that your computer BIOS has been updated to the latest version.

■ **My computer cannot power on**

Check the following:

1. Ensure that the USB 3.0 Expansion Card is properly connected to the PCI Express slot on your computer. Try unplugging the card and reconnecting it.
2. Ensure that computer's boot drive (HDD) is connected properly.
3. Does USB 3.0 Expansion Card conflict with other PCI Express cards? If so, please carefully remove other PCIe cards to determine which card is causing the conflict.
4. USB devices can sometimes cause conflicts that can prevent your computer from turning on. Try unplugging USB devices from the USB ports on your computer.

USB 3.0 Expansion Card

Specifications |

Dimensions (PCB size)	65mm (L) × 63mm (W)
Weight	44g
USB Bus Power Output	5V DC, 900mA (max) per port
PC Interface	PCI Express® 2.0 single lane (x1)
USB Ports:	2 external (supports USB 1.1 / 2.0 / 3.0)
Connection Bandwidth	Up to 5Gbits per second
Operating Temperature	0°C (32°F) to 70°C (158°F)
Certificates	CE, FCC, BSMI
Warranty	2-years limited

Ordering Information |

<i>Device Description</i>	<i>Transcend P/N</i>
USB 3.0 Expansion Card	TS-PDU3
USB 3.0 Express Card	TS-PNU3
USB 3.0 / SATA III Combo Card	TS-PDC3

Transcend Limited Warranty |

“Above and Beyond” is the standard we set ourselves for customer service at Transcend. We consistently position ourselves to be significantly above the industry norm, which is all part of our commitment to Customer Satisfaction.

Please do not break or remove the warranty sticker on your Transcend products, as this will void your product warranty.

All **Transcend information, Inc. (Transcend)** products are warranted and tested to be free from defects in material and workmanship and to conform to the published specifications. During the warranty period should your Transcend **USB 3.0 Expansion Card** fail under normal use in the recommended environment due to improper workmanship or materials, Transcend will repair the product or replace it with a comparable one. This warranty is subject to the conditions and limitations set forth herein.

Duration of Warranty: The Transcend **USB 3.0 Expansion Card** is covered by this warranty for a period of two (2) years from the date of purchase. Proof of purchase including the date of purchase is required to collect on the warranty. Transcend will inspect the product and decide whether to repair or replace it. Transcend reserves the right to provide a functional equivalent product, or a refurbished replacement product.

Limitations: This warranty does not apply to product failure caused by accidents, abuse, mishandling, improper installation, alteration, acts of nature, improper usage, or problems with electrical power. In addition, opening or tampering with the product casing, or any physical damage, abuse or alteration to the product's surface, including all warranty or quality stickers, product serial or electronic numbers will also void the product warranty. Transcend is not responsible for recovering any data lost due to the failure of a hard drive device. Transcend's **USB 3.0 Expansion Card** must be used with devices that conform to the recommended industry standards. Transcend will not be liable for damages resulting from a third party device that causes the Transcend **USB 3.0 Expansion Card** to fail. Transcend shall in no event be liable for any consequential, indirect, or incidental damages, lost profits, lost business investments, lost goodwill, or interference with business relationships as a result of lost data. Transcend is also not responsible for damage or failure of any third party equipment, even if Transcend has been advised of the possibility. This limitation does not apply to the extent that it is illegal or unenforceable under applicable law.

Disclaimer: The foregoing limited warranty is exclusive. There are no other warranties, including any implied warranty of merchantability or fitness for a particular purpose. This warranty is not affected in any part by Transcend providing technical support or advice.

Online Registration: To expedite the warranty service, please register your Transcend Product within 30 days of purchase.

Register online at www.transcend-info.com/register

* The specifications mentioned above are subject to change without notice.



Transcend Information, Inc.

www.transcend-info.com

*The Transcend logo is a registered trademark of Transcend Information, Inc.

*All logos and marks are trademarks of their respective companies.